

September 19, 2024

Parcel E Music Venue Pre-Bid Meeting: Bid Group 3



General Information

- **Session is being recorded and will be posted**
- **Registration will be published**
- **Technical Difficulties? Chat Chad Williams**

Questions will be answered following the presentation (Please use the chat feature).



Introductions

- **Jon Revtai**, PJ Dick Project Manager,
jon.revtai@pjdick.com
- **Adam Cummins**, PJ Dick Preconstruction Manager,
adam.cummins@pjdick.com
- **Sophia Melocchi**, PJ Dick Project Engineer / CCIP
Manager, sophia.melocchi@pjdick.com
- **Chad Williams**, e.Holdings Fabrication & Media
Specialist, chad.Williams@eholdings.com



Meeting Objectives

- **Project overview**
- **Project Milestones**
- **M/W Business and Workforce Goals**
- **Project Website**
- **Union Trade Requirements**
- **Bid Group 3 Packages**
- **Submission of Bid**
- **What's Next?**
- **Q&A**



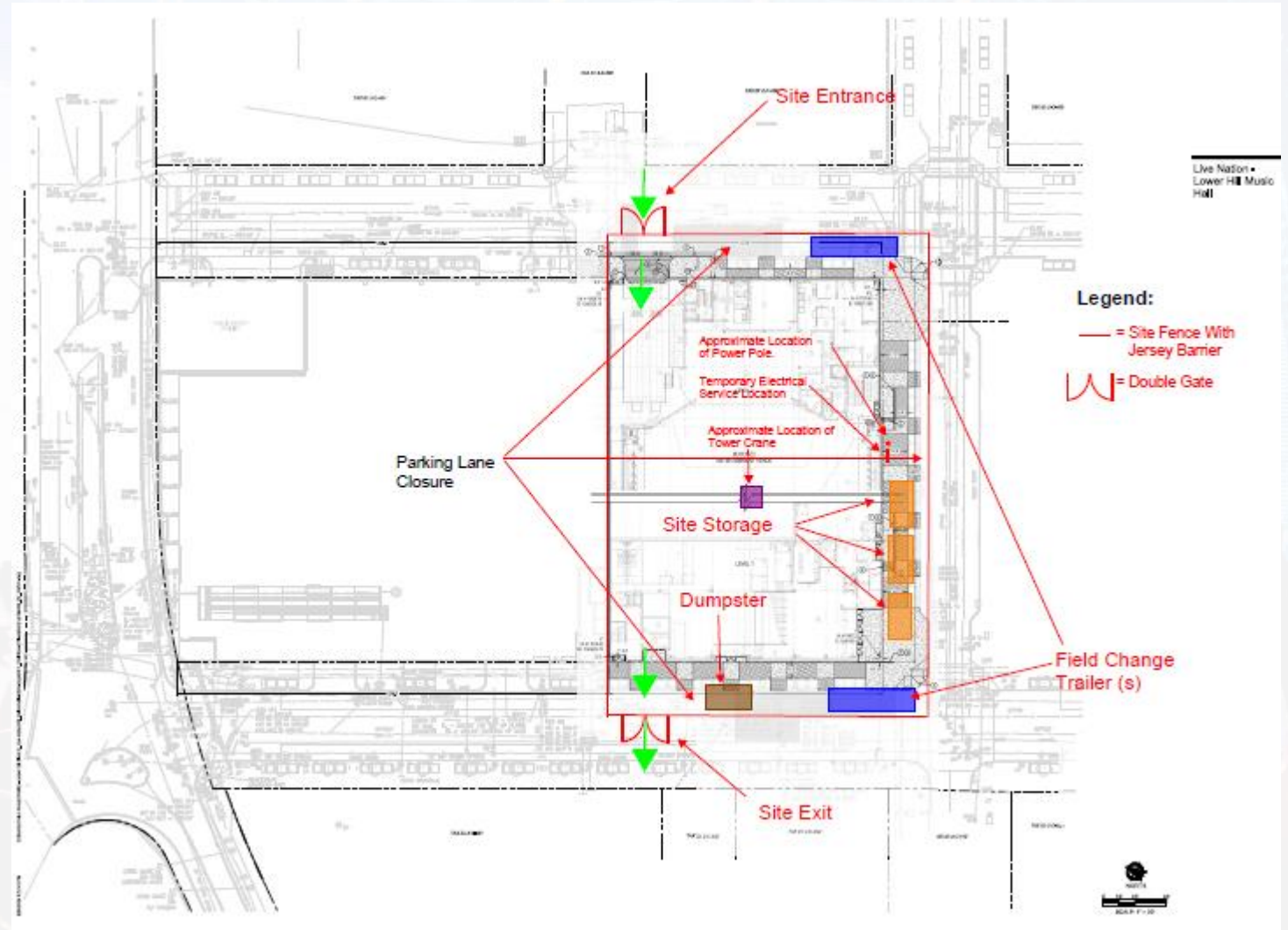
Project Overview



- 100,000-sf multi-story, free-standing building
- Located on an existing gravel parking lot in the Lower Hill District adjacent to Wylie Avenue
- Project includes Redevelopment Assistance Capital Program (RACP) funding & Community Collaboration Implementation Program (CCIP) requirements
- Bidders who are interested **MUST** sign an NDA & return to pjdest@pjdick.com prior to receiving the documents
- Project is to be bid in 3 packages. Bid Groups 1 & 2 included CIP Concrete Foundations, Earthwork & Site Utilities, Deep Foundations/Ground Improvements, Masonry, and Structural Steel



Project Overview



Projected Schedule Milestones

Construction
Team Mobilization
- **November 2024**

Building Super
Structure Commences
- **February 2025**

Major Mechanical
Commences -
October 2025

Owner Provided
Items Commences -
April 2026

Excavation, Site Utilities,
and Foundations
Commences -
November 2024

Interior Construction
& Facade
Commences -
September 2025

Elevator Installation
Commences -
April 2026

Work Complete -
June 2026



M/W Business & Workforce Goals

CCIP REQUIREMENTS

- **30% Minority and 15% Women business participation**
- **Job Creation/Local Inclusion**
 - 20% New Hires Minority Labor Force
 - ✓ Local residents of the Greater Hill District Community
 - ✓ New hires outside of the Greater Hill District Community

CITY OF PITTSBURGH REQUIREMENTS

- **Overall Workforce Development**
 - 25% minority and 10% women

SEA REQUIREMENTS

- **25% Minority and 10% Women business participation.**
 - Certification through PAUCP and US SBA

***MWBE companies SHALL maintain current certification for the duration of their Work and/or supply contract to be counted towards the goal.**

***Veteran- and LGBTQ-owned firms are encouraged to bid but do not count toward CCIP or SEA goals. This is an owner driven goal beyond CCIP, SEA, or City of Pittsburgh.**



M/WBE Goals – How to Achieve the Goal (CCIP)

M/WBE to be certified (PAUCP, NMSDC, WBENC, EMSDC, PADGS SDB, and SBA).

- Self certifications are NOT accepted.
- **MWBE Direct** Subcontract with PJ Dick = 100%
 - Participation goals encouraged beyond 1st Tier and to be flowed down.
- **JV Teams**
 - >51% = 100%
 - <50% = the value of the MWBE contracted portion of the JV
 - Participation goals encouraged beyond 1st Tier and to be flowed down.
- **1st Tier Subcontractors** under Non-MWBE = 100% paid to MWBE
- **Supply/Materials** any level = 100% paid to MWBE
- **Trucking/Transportation** = 100% for services rendered by MWBE



M/WBE Goals – How to Calculate Participation (SEA)

M/WBE portion is a calculation on your CCIP plan, **NOT** another plan.

- **MWBE Subcontracted Work**
 - If self performing <50% of the work, credit is only earned on the performed work.
- **Supply/Materials Purchased from an MBE or WBE**
 - 60% of the amount if proof is provided to qualify as a “full-service supplier”
 - If proof is not provided, only 2% of the amount qualifies.
 - “Proof” = warehouse or storage capacity, inventory records, agreement with manufacturers, ownership of material handling/delivery equipment, and demonstration of fiscal responsibility on previous sales.



M/W Workforce Goals

- **Workforce Opportunities**

- Pre-apprenticeship programs with the Introduction to the Construction Trades via Pittsburgh Gateways Corporation, A. Philip Randolph Institute, Trade Institute of Pittsburgh
 - Bidding requirements will include more information on these groups.

- **Training Opportunities**

- Riverside Center for Innovation Resource
 - Small business training
 - Disadvantaged entrepreneurs development/training

- **Workforce Information, Resources, etc.**

- PJ Dick is developing a “Careers” page for the project.
 - To be used by GC & subcontractors



Project Website

Visit www.pjdick.com/parcel-e

- **“View Project Career Opportunities”**
 - PJ Dick is currently building a “Careers” website specific for this project.
 - PJ Dick & project subcontractors will use this site to post open job listings
 - Interested parties can apply to jobs here.
- **Active Bids**
 - Most up-to-date information regarding current bid group

HELP US BUILD THE REGION'S NEWEST MUSIC VENUE ON THE LOWER HILL

PJ Dick is constructing a 4,500-seat concert venue on the Lower Hill, beginning in Fall of 2024. We are committed to hiring a local minority and female labor force and diverse businesses, with an emphasis on those owned by minority, women-owned, veteran-owned, and LGBTQ+ individuals.

Click the careers link below to view all open positions and a list of applicable labor unions to join.
Click the active bids below link to view active bidding opportunities.


[VIEW PROJECT CAREER
OPPORTUNITIES \(COMING
SOON\) →](#)

[VIEW ACTIVE BIDS →](#)



Project Website

Visit www.pjdick.com/parcel-e



UNION CONTRACTS

All PJ Dick construction craft positions are unionized. We maintain collective bargaining agreements with the local unions and post new positions at local construction industry union halls. When you work for PJ Dick as one of our skilled craftspeople, you will have the opportunity to work on some of the largest projects in our region.

When applying for a job with us, you must submit your employment application to PJ Dick and then contact the union hall associated with your craft. The appropriate union representative will provide all the details regarding membership, testing, interviewing, and apprenticeships.

PJ Dick currently has agreements with the following unions:

- » Carpenters Union
- » Cement Masons & Operative Plasterers
- » Ironworkers (rebar only)
- » Laborers International Union of North America
- » International Union of Operating Engineers

- **“Union Contracts”**

- Information on PJ Dick’s union labor policy
- Direct links to Carpenters, Cement Masons & Operative Plasterers, Ironworkers, Laborers, and Operating Engineers websites for more information & how to join.

Union Trade Requirements

- **100% Union Participation Required**
- **PJ Dick can help you with your path to joining the Union.**
 - **Supported several small businesses join the Unions for the FNB Tower project.**



Bid Group 3

Bids Due: October 15, 2024 @ 2PM EST

- 03E – Cast-In-Place Concrete (Building)
- 03F – Cast-In-Place Concrete (Site)
- 05B – Miscellaneous Metals
- 06B – Millwork & Finish Carpentry
- 07A – Waterproofing
- 07B – Metal Wall Panels
- 07C – Roofing
- 07D – Spray Applied Fireproofing
- 08A – Doors, Frames, and Hardware
- 08C – Overhead/Rolling Doors & Grilles
- 08D – Entrances, Storefronts, & Curtain Walls
- 09A – GWB Assemblies/General Trades/Fireproofing/EIFS
- 09B – Tiling
- 09C – Wood Flooring
- 09E – Carpet & Resilient Flooring
- 09F – Terrazzo Flooring
- 09G – Resinous Flooring
- 09H - Painting
- 10A - Signage
- 10B - Interior Specialties
- 10E – Exterior Specialties
- 11A – Vehicle and Pedestrian Equipment
- 11F – Facility Maintenance & Operation Equipment
- 12A – Window Treatments
- 14A - Elevators
- 21A – Fire Suppression
- 22B – Plumbing
- 23A – HVAC
- 26A – Electrical
- 32A – Asphalt Paving
- 32C - Landscaping



Submission of Bid

- **PJ Dick Bid Forms**

- Several bid packages will have their own form to submit
 - Forms will be issued in a forthcoming Bid Clarification
 - Some forms will list smaller break-out areas of work for direct bid and participation of Diverse Companies
- Please fill in **ALL** information requested on the bid form.
- Complete all CCIP Exhibits D, E, F, and G with your submission.



CCIP Exhibits D, E, F, and G

- **Exhibit D** – Contractor’s MWBE Inclusion Plan
 - List name of subcontractor(s)/supplier(s), MWBE certification, trade, contract value, and %.

Planned Overall M/WBE Participation *Include prime contractor's information, if applicable:*

Name of Contractor, Subcontractor, or Vendor	M/WBE Certification #	Trade, Service, Or Work to be Provided	Dollar	%

- **Exhibit E** – Contractor and Sub-Contractor Acknowledgement Form
 - Non-discrimination agreement.

- **Exhibit F** – Manpower Projection Plan
 - Projected number of required workers for the Work, total number of current employees, and projected number of new hires for entire project.

WORKFORCE PLAN

Projected Number of Required Workers for this entire project	Total Number of Current Employees on payroll	Projected Number of New Hires for this entire project

- **Exhibit G** – Monthly Local Resident Inclusion Form
 - Required number of workers, number of available current staff, number of Local Residents (15213 and 15219), number of New Hire Workers



What's Next?

- **Interested in bidding?**
 - Email bidlowerhillmusicvenue@pjdick.com
 - Executed NDA required
- **Stay up to date with bidding & upcoming events:**
 - Visit www.pjdick.com/subcontractor-opportunities
 - Visit www.pjdick.com/parcel-e



QUESTIONS?

